

LET THERE
BE SOUND



SINCE 1979

PROFESSIONAL SOUND SYSTEMS



WHO WE ARE

Lloyd Lee Company is one of India's leading designing, engineering and manufacturing company providing professional sound solutions. Superior built quality, outstanding reliability, top-notch engineering and innovativeness has been the hallmark of our brand for over 40 years now. This trust in our expertise and product portfolio is the reason why pro-audio professionals, sound rental companies, sound contractors, upscale entertainment venues and concert organizers across India seek us to exceed, elevate and empower their sound experience. Our speaker systems feature in varied commercial and professional settings that include the biggest auditoriums, stadiums, concert arenas, high-end entertainment venues, clubs, hotels, restaurants and sound rental spaces.



OUR LEGACY

Mr. Richard Braganza, an early pioneer in the Indian sound industry, founded ElectroCord in the year 1979, which later transformed into the Lloyd Lee Company that we know of today. The company soon earned itself a reputation as a manufacturer of quality sound equipment at very reasonable prices. Today Lloyd Lee Company is helmed by Zura Braganza, who has taken over his father's legacy with an enthusiastic zeal and dynamic outlook for the company's future. Along with his brother Lee Braganza, an established live sound engineer, Zura is primed to advance the company's sound solutions portfolio to the next level.

WHY LLC

Every Lloyd Lee Company manufactured product exhibits an outstanding level of workmanship and value. Our loudspeakers use the most premium components to provide the best quality audio output with maximum durability. With nearly 40 years of pro-audio speaker manufacturing experience it's no surprise that our products easily uphold the promise of reliability and exceptional performance that we make to our customers. For a product category that experiences major wear-out, our products simply go on.

THE FUTURE

New series, new products, and a new outlook – all to offer more performance, dependability and value. Our customers trust us because we go that extra mile to understand their requirements. Only then do we recommend what's best suited for them. We understand the need for innovation and original thought, which reflects in our product portfolio that we are constantly fine tuning to cater present and future market requirements. Backed by a dedicated management, precise technical expertise and exclusive designs, Lloyd Lee Company is ready to establish itself as one of India's finest professional audio equipment manufacturing company.

EDGE-X

SERIES

LINE ARRAY LIVE SOUND SYSTEMS



LLOYD[®]
LEE
COMPANY
LIVE
SINCE 1979

EDGE-X

LINE ARRAY LIVE SOUND SYSTEMS

LOADED WITH CUSTOM BUILT
ITALIAN LOUDSPEAKERS



The new EDGE-X Series was developed to meet the need for a high-performance line array system that combined the sonic impact and vocal intelligibility of the renowned ELAN and EDGE series with the uniform, predictable coverage that only a line-array configuration can deliver.

This loudspeaker series comprises of 5 high performance line-array systems and 3 high power subwoofers. EDGE-X systems deliver exceptional audio quality from compact, lightweight enclosures.

Employing the best in Italian compression drivers and woofers, EDGE-X loudspeakers perform louder and longer with minimal stress on system components. The series also features innovative horn-loading techniques with line array technology to create extremely powerful systems that deliver maximum impact and exceptional coverage thus reducing the need for delay towers.

Designed for power, superior sound quality and portability, the EDGE-X SERIES from Lloyd Lee Co. is the ideal solution for today's medium and large venues, either ground stacked or flown for various applications such as auditoriums, stadiums, concert halls, club sound, theatres and live sound applications

INCREDIBLE POWER. EVEN COVERAGE. HIGHER CLARITY.

EDGE-X LINE ARRAYS **XLAI-V2**

1X12 INCH LF + 3X1 INCH HF 2 WAY LINE ARRAY

■ FEATURES

- 800w AES, passive 2-way constant curvature line array system.
- High output coupled with clean and precise sound reproduction.
- 12 inch 700w AES woofer in bass reflex design.
- 3 x 1 inch exit compression driver for power and performance.
- Italian (B&C) drivers for superior performance and durability.



EDGE-X LINE ARRAYS **XLAI-B**

1X12 INCH LF + 3X1 INCH HF 2 WAY LINE ARRAY

■ FEATURES

- 800w AES, passive 2-way line array system.
- High output coupled with clean and precise sound reproduction.
- 12 inch 700w AES woofer in bass reflex design.
- 3x1 inch exit compression driver for power and performance.
- Italian (B&C) drivers for superior performance and durability.



EDGE-X LINE ARRAYS **XLAI-5-V2**

2X10 INCH LF + 2X6.5 INCH MF + 2X1 INCH HF 3 WAY LINE ARRAY

■ FEATURES

- High performance 1000w AES, 3-way (Bi-amp) Line array system
- 2x 10-inch-high performance woofers in bass reflex design
- 2x6.5-inch-high performance midrange speakers
- 2 x 1-inch compression driver, horn-loaded for power and performance
- 16 ohms low, mid-high frequency sections
- Very high output with coupled with clean and precise sound.



EDGE-X LINE ARRAYS **XLA 7**

2X12 INCH LF + 2X8 INCH MF + 2X1.4 INCH HF 3 WAY LINE ARRAY

■ FEATURES

- High performance 1900w AES, 3-way line array system.
- 16 OHMS low, mid and high sections.
- Very high output coupled with clean and precise sound.
- 2x12 inch in bass reflex design, 2x8 inch slot loaded mid design.
- 2x1.4 inch exit neo compression driver for power and performance.



EDGE-X LINE ARRAYS **XLA 9**

2X14 INCH LF + 4X7 INCH MF + 2X1.4 INCH HF 3 WAY LINE ARRAY

■ FEATURES

- High performance 3280w AES, 3-way line array system.
- All neodymium Italian drivers for superior performance and durability.
- 2x14 inch high performance woofers in bass reflex design.
- All new 4x7 inch reflex loaded mid design.
- 2x1.4 inch exit large format neo compression driver for power and performance.



EDGE-X SUBWOOFER **XLS 18**

1X18 INCH SUBWOOFER SYSTEM

■ FEATURES

- 1200W AES, very compact and powerful design.
- Pole mount to elevate a two-way loudspeaker.
- Extended low frequency reproduction and excellent transient response.
- 18 inch cutting-edge technology, Italian (B&C) woofer for maximum performance.
- Enclosure is stackable in both horizontal and vertical orientations.



EDGE-X SUBWOOFER **XLS 28**

2X18 INCH SUBWOOFER SYSTEM

■ FEATURES

- 2400W AES direct radiating vented LF subwoofer, deep bass down to 27Hz.
- 2x18 inch low distortion, Italian (B&C) LF transducers with weather protected cone.
- Very high SPL coupled with clean and precise low frequency.
- Extreme low frequency reproduction and excellent transient response.
- Enclosure is stackable in both horizontal and vertical orientations.



EDGE-X SUBWOOFER **XLS 48**

2X18 INCH SUBWOOFER SYSTEM

■ FEATURES

- 3600W AES direct radiating vented subwoofer, deep bass down to 25Hz.
- 2x18 inch low distortion Italian (B&C) LF transducers with weather protected cone.
- Very high SPL coupled with clean and precise low frequency.
- Extreme low frequency reproduction and excellent transient response.
- Enclosure is stackable in both horizontal and vertical orientations.



TECHNICAL SPECIFICATIONS	XLA 1-V2	XLA 3	XLA 5 - V2	XLA 7
TYPE	Two-way, compact line array element	Two-way, compact line array element	Three-way,(Biamp) compact line array element	Three-way, compact line array element
FREQUENCY RANGE	50Hz-19kHz	50Hz-19kHz	55Hz-18kHz	55Hz-18kHz
DRIVERS LF	1 x 12 inch woofer, reflex loaded	1 x 12 inch reflex-loaded	2 x 10 inch woofer, reflex loaded	2 x 12 inch woofer, reflex loaded
DRIVERS MF	NA	NA	2 x 6.5 inch mid-range, horn loaded	2 x 8 inch midrange, horn loaded
DRIVERS HF	3 x 1 inch exit HF compression driver, horn loaded	3 x 1 inch exit HF compression driver, horn loaded	1 x 1 inch exit HF compression driver horn loaded	2 x 1.4 inch exit HF compression drivers, horn loaded
RATED POWER	Passive: 800W AES, 2800W Peak LMF: 700W AES, 2800W Peak HF: 105W AES, 420W Peak	Passive: 800W AES, 2800W Peak LMF: 700W AES, 2800W Peak HF: 105W AES, 420W Peak	600W AES, 2400W PEAK MF+HF: 400W AES, 1600W Peak	LF: 1200W AES, 4800W Peak MF: 500W AES, 2000W Peak HF: 200W AES, 720W Peak
SENSITIVITY	101 dB	101 dB	LF: 99 dB MF: 103 dB HF: 110 dB	LF: 102 dB MF: 105 dB HF: 112 dB
MAXIMUM SPL (CALCULATED @ 1M)	128dB continuous, 134dB peak	128dB continuous, 134dB peak	LF: 123dB continuous, 129dB peak MF: 131dB continuous, 137dB peak HF: 136dB continuous, 143dB peak	LF: 126dB continuous, 133dB peak MF: 134dB continuous, 140dB peak HF: 139dB continuous, 145dB peak
NOMINAL IMPEDANCE	8 ohms	8ohms	16 ohms LF, 16 ohms MHF	LF1:16 ohms LF2: 16 ohms MF: 16 ohms HF: 16 ohms
DISPERSION (-6db)	110° horizontal x 12° vertical	110° horizontal x 12° vertical	110° horizontal x 12° vertical	110° horizontal x 12° vertical
CROSSOVER	1.2kHz (Passive)	1.2 kHz (Passive)	(Bi-amp + Passive)	(Active Tri-amp)
ENCLOSURE	Vertical trapezoid ,BWP ply construction	Vertical trapezoid, BWP ply construction	Vertical trapezoid, BWP ply construction	Vertical trapezoid ,BWP ply construction
FINISH	Lloyd Lee Co. weather resistant textured paint cover	Lloyd Lee Co. weather resistant textured paint cover	Lloyd Lee Co. weather resistant textured paint cover	Lloyd Lee Co. weather resistant textured paint cover
PROTECTIVE GRILLE	Perforated Steel Powder Coated, 16G.	Perforated Steel Powder Coated, 16G.	Perforated Steel Powder Coated, 16G.	Perforated Steel Powder Coated, 16G.
CONNECTORS	2 x Neutrik NL4	2 x Neutrik NL4	2 x Neutrik NL4	2 x Neutrik NL8
DIMENSIONS	630 mm x 335 mm x 396 mm (WxHxD)	669 mm x 332 mm x 385 mm (WxHxD)	- mm x - mm x - mm (WxHxD)	1219 mm x 332 mm x 385 mm (WxHxD)
WEIGHT	29kg (Approx)	32kg (Approx)	40kg (Approx)	61kg (Approx)

TECHNICAL SPECIFICATIONS	XLA 9	XLS 18	XLS 28	XLS 48
TYPE	Three-way, compact line array element	Bass Reflex Subwoofer	Bass Reflex Subwoofer	Bass Reflex Subwoofer
FREQUENCY RANGE	45Hz-19kHz	25Hz-250Hz	27Hz-250Hz	25Hz-250Hz
DRIVERS LF	2 x 14 inch Neo woofer, reflex loaded	1 x 18 inch, reflex-loaded direct radiator	2 x 18 inch, reflex-loaded direct radiator	2 x 18 inch, reflex-loaded direct radiator
DRIVERS MF	4 x 7 inch Neo midrange , reflex loaded	NA	NA	NA
DRIVERS HF	2 x 1.4 inch exit HF large format Neo compression drivers, horn loaded	NA	NA	NA
RATED POWER	LF: 2000W AES, 8000W Peak MF: 1000W AES, 4000W Peak HF: 280W AES, 960W Peak	1200W AES, 4000W Peak	2400W AES, 9600W Peak	3600W AES, 14400W Peak
SENSITIVITY	LF: 101 dB MF: 108 dB HF: 114 dB	98dB	101dB	101dB
MAXIMUM SPL (CALCULATED @ 1M)	LF: 134dB continuous, 140dB Peak MF: 138dB continuous, 142dB Peak HF: 142dB continuous, 148dB Peak	127dB continuous, 133dB Peak	130dB continuous, 136dB Peak	134dB continuous, 140dB Peak
NOMINAL IMPEDANCE	LF1:8 ohms LF2: 8 ohms MF: 8 ohms HF: 8 ohms	LF: 8 ohms	LF: 4 ohms	LF: 4 ohms
DISPERSION (-6db)	90° horizontal x 10° vertical	NA	NA	NA
CROSSOVER	(Active Tri-amp)	NA	NA	NA
ENCLOSURE	Vertical trapezoid ,BWP ply construction	Rectangular , BWP ply construction	Rectangular , BWP ply construction	Rectangular , BWP ply construction
FINISH	Lloyd Lee Co. weather resistant textured paint cover	Lloyd Lee Co. weather resistant textured paint cover	Lloyd Lee Co. weather resistant textured paint cover	Lloyd Lee Co. weather resistant textured paint cover
PROTECTIVE GRILLE	Perforated Steel Powder Coated, 16G.	Perforated Steel Powder Coated, 16G.	Perforated Steel Powder Coated, 16G.	Perforated Steel Powder Coated, 16G.
CONNECTORS	2 x Neutrik NL8	2 x Neutrik NL4	2 x Neutrik NL4	2 x Neutrik NL4
DIMENSIONS	1219 mm x 387 mm x 426 mm (WxHxD)	686 mm x 547 mm x 574 mm (WxHxD)	1084 mm x 547 mm x 692 mm (WxHxD)	1219 mm x 536 mm x 808 mm (WxHxD)
WEIGHT	62kg (Approx)	48kg (Approx)	88kg (Approx)	97kg (Approx)

Note: Specifications are subject to change without prior notice.

LLOYD LEE CO.

Mobile: 9833374789/9820307275
Email Add: sales@lloydleecompany.com
Website: www.lloydleecompany.com

ELAN PRO

SERIES

TOURING PRO SOUND SYSTEMS



SINCE 1979

ELAN PRO

TOURING PRO SOUND SYSTEMS

LOADED WITH CUSTOM BUILT
ITALIAN LOUDSPEAKERS



ELAN PRO Series represents the birth of high-end horn-loaded speaker systems from Lloyd Lee Company. Designed for high SPL and superior sound quality, ELAN PRO systems will astound you with performance and power that's leagues ahead of ordinary speaker systems.

Employing the best in Italian compression drivers and woofers, ELAN PRO loudspeakers can perform louder and longer with less stress on system components.

The ELAN PRO series from Lloyd Lee Co. is the ideal solution for today's medium and large venues, including clubs,

theatres and live sound applications that are on the move. With the flexibility to be ground-stacked in multiple configurations the ELAN PRO horn-loaded speaker systems deliver the desired performance and clarity in a compact and versatile solution.

MORE SOUND. SUPERIOR COVERAGE.

ELAN PRO SPEAKER **MHB PRO**

1X12 INCH LMF + 1.4 INCH HF HORN LOADED MID-HIGH SPEAKER

■ FEATURES

- 500W AES, 2000W peak passive mid-high speaker system.
- Very long throw and high-power capability.
- 60°H x 40°V coverage pattern.
- 1x12 inch high performance mid-section.
- 1x1.4 inch exit high efficiency large format compression driver.



ELAN PRO SPEAKER **MH7 PRO**

1X12 INCH LMF + 1.4 INCH HF HORN LOADED MID-HIGH SPEAKER

■ FEATURES

- 750W AES, 2800W peak passive mid-high speaker system.
- Very long throw and high-power capability.
- 1x12 inch high performance mid-section.
- 1x1.4 inch exit large format high efficiency compression driver.
- 60°H x 40°V coverage pattern.



ELAN PRO SPEAKER **LMH9**

2X12 INCH LMF + 2X1.4 INCH PASSIVE SPEAKER SYSTEM.

■ FEATURES

- 1000 W AES, 3000 W peak bi-amp mid-high speaker system.
- Very high acoustic output for very compact enclosure.
- 2x12 inch high performance mid-section.
- 2x1.4 inch exit large format high efficiency compression driver.
- Long throw capability.



ELAN PRO SUBWOOFER **LF1 PRO**

1X18 INCH HORN LOADED SUBWOOFER

■ FEATURES

- 1000 W AES, 4000W peak.
- Compact design high-output horn loaded subwoofer system.
- 1x18 inch very high excursion Italian (B&C) bass driver.
- Frequency range 32Hz-190Hz.
- Enclosure is stackable in both horizontal and vertical orientations.



ELAN PRO SUBWOOFER **LF3 PRO**

1X18 INCH HORN LOADED SUBWOOFER

■ FEATURES

- 1300W AES, 4800W peak.
- Compact design high-output horn loaded subwoofer system
- 1x18 inch very high excursion, high-power Italian (B&C) bass driver
- Frequency range 30Hz-180Hz
- Enclosure is stackable in both horizontal and vertical orientations



ELAN PRO SUBWOOFER **LF5 PRO**

1X18 INCH HORN LOADED SUBWOOFER

■ FEATURES

- 1700W AES, 6800W peak, high efficiency and high output design.
- Compact and light weight design.
- Fusion horn/reflex loaded subwoofer system.
- 1x18 inch very high excursion, high-power Italian (B&C) bass driver.
- Enclosure is stackable in both horizontal and vertical orientations.



ELAN PRO SUBWOOFER **LF7 PRO**

2X18 INCH HORN LOADED SUBWOOFER

■ FEATURES

- 2600W AES, 9600W peak, high efficiency and high output design.
- Dual vented horn subwoofer system with long throw capability.
- Dual 18 inch very high excursion, high-power Italian (B&C) bass drivers.
- Frequency range 30Hz-180Hz.
- Enclosure is stackable in both horizontal and vertical orientations.



ELAN PRO SUBWOOFER **LF9 PRO**

2X18 INCH HORN LOADED SUBWOOFER

■ FEATURES

- 3400W AES, 14000W peak, high efficiency and high output design.
- Dual vented horn subwoofer system with long throw capability.
- 2x18 inch very high excursion, high-power Italian (B&C) bass drivers.
- Frequency range 30Hz-180Hz.
- Enclosure is stackable in both horizontal and vertical orientations.



ELAN PRO

TECHNICAL SPECIFICATIONS	MH3 PRO	MH7 PRO	LMH9	LF1 PRO
TYPE	Two-way mid high horn loaded	Two-way mid high horn loaded	Two way mid high horn loaded Passive	Horn loaded Subwoofer
FREQUENCY RANGE	100Hz-19KHz	100Hz-19Hz	120Hz-19KHz	32Hz-190Hz
LF / LMF SECTION	1 x 12 inch Reflex Horn Hoaded	1 X 12 Inch Reflex Horn Loaded	2 X 12 Inch Horn Loaded	1 X 18 Inch Horn Loaded
HF SECTION	1 x 1.4-inch exit HF compression driver, horn loaded	1 x 1.4 inch exit HF compression driver, horn loaded	2 x 1.4 inch exit HF compression driver, horn loaded	NA
RATED POWER	LMF: 400W AES, 2000W peak HF: 100W AES, 400W peak	LMF: 00W AES, 2000W peak HF: 120W AES, 400W peak	LMF: 800W AES, 2200W peak HF: 200W AES, 400W peak	1000 W AES, 4800 W peak
SENSITIVITY	LMF: 102dB HF: 109dB	LMF: 103dB HF: 110dB	LMF: 105dB HF: 112dB	101dB
MAXIMIUM SPL (CALCULATED @ 1M)	LMF: 125dB continuous ,131 dB peak HF: 135dB continuous,141dB peak	LMF: 127dB continuous ,133 dB peak HF: 135dB continuous,141dB peak	LMF: 128dB continuous ,134dB peak HF: 136dB continuous,142dB peak	129dB continuous,135dB peak
NOMINAL IMPEDANCE	8 ohms	LMF : 8 ohms HF: 8 ohms	LMF : 8 ohms HF: 8 ohms	8 ohms
DISPERSION (-6db)	60° horizontal x 40° vertical	60° horizontal x 40° vertical	100 horizontal x 15 vertical	---
CROSSOVER	1.8 kHz (Passive)	1.9 kHz (Passive)	1.8kHz (Active)	-----
ENCLOSURE	Trapezoid , BWP ply construction	Trapezoid, BWP ply construction	Rectangular, BWP ply construction	Rectangular, BWP ply construction
FINISH	Lloyd Lee Co. weather resistant textured paint cover	Lloyd Lee Co. weather resistant textured paint cover	Lloyd Lee Co. weather resistant textured paint cover	Lloyd Lee Co. weather resistant textured paint cover
PROTECTIVE GRILLE	Perforated Steel Powder Coated, 16G.	Perforated Steel Powder Coated, 16G.	Perforated Steel Powder Coated, 16G.	Perforated Steel Powder Coated, 16G.
CONNECTORS	2 x Neutrik NL4	2 x Neutrik NL4	2 x Neutrik NL4	2 x Neutrik NL4
DIMENSIONS	566 mm x 633 mm x 615 mm (WxHxD)	566 mm x 802 mm x 615 mm (WxHxD)	1095mm x 373mm x 615mm (WxHxD)	624 mm x 804 mm x 603 mm (WxHxD)
WEIGHT	37 Kg (Approx)	50 kg (Approx)	76 Kg (Approx)	49 kg (Approx)

TECHNICAL SPECIFICATIONS	LF3 PRO	LF5 PRO	LF7 PRO	LF9 PRO
TYPE	Horn Loaded Subwoofer	Horn Loaded Subwoofer	Horn Loaded Subwoofer	Horn Loaded Subwoofer
FREQUENCY RANGE	30Hz-180Hz	32Hz-180Hz	30Hz-180Hz	30Hz-180Hz
DRIVERS LF	1 X 18 inch Horn Loaded	1 x 18 inch Horn Loaded	2 X 18 inch Reflex Horn Loaded	2 X 18 inch Reflex Horn Loaded
RATED POWER	1300W AES, 4800W peak	1700W AES, 6800W peak	2600W AES, 9600W peak	3400W AES, 14000W peak
SENSITIVITY	101dB	101dB	104dB	104dB
MAXIMIUM SPL (CALCULATED @ 1M)	130dB continuous,136dB peak	132dB continuous,138dB peak	134dB continuous,140dB peak	138dB continuous,144dB peak
NOMINAL IMPEDANCE	8 ohms	8 ohms	4 ohms	4 ohms
ENCLOSURE	Rectangular, BWP ply construction	Rectangular, BWP ply construction	Rectangular, BWP ply construction	Rectangular, BWP ply construction
FINISH	Lloyd Lee Co. weather resistant textured paint cover	Lloyd Lee Co. weather resistant textured paint cover	Lloyd Lee Co. weather resistant textured paint cover	Lloyd Lee Co. weather resistant textured paint cover
PROTECTIVE GRILLE	Perforated Steel Powder Coated, 16G.	Perforated Steel Powder Coated, 16G.	Perforated Steel Powder Coated, 16G.	Perforated Steel Powder Coated, 16G.
CONNECTORS	2 x Neutrik NL4	2 x Neutrik NL4	2 x Neutrik NL4	2 x Neutrik NL4
DIMENSIONS	624 mm x 804 mm x 603 mm (WxHxD)	624 mm x 804 mm x 804 mm (WxHxD)	1219 mm x 620 mm x 769 mm (WxHxD)	1219 mm x 620 mm x 870 mm (WxHxD)
WEIGHT	49 Kg (Approx)	67 kg (Approx)	96 Kg (Approx)	131.5 kg (Approx)

Note: Specifications are subject to change without prior notice.

ENCORE

SERIES

LIVE SOUND - PORTABLE / INSTALL SYSTEMS



SINCE 1979

The ENCORE Series consist various models offering a flexible set of performance options and discreet solutions for sound reinforcement. The range comprises powerful two-way full-range speakers and subwoofers.

Employing the best in Italian compression drivers and woofers, ENCORE loudspeakers perform louder and longer

with less stress on system components. ENCORE provides high output, smooth natural response and controlled coverage with an unmatched combination of functional good looks and compact design. The HF horns of the ENCORE EM12 and EM15 are rotatable for easy horizontal mounting and monitor applications.

ENCORE systems are suitable for small to medium-sized live sound applications, auditorium, houses of worship, club sound and various installations. ENCORE speaker systems are easy to transport and set-up which makes them the most exciting portable speaker series available.

PORTABLE PROFESSIONAL PURE SOUND

ENCORE FULL RANGE EM12

1X12 INCH LF + 1 INCH HF 2 WAY FULL-RANGE LOUDSPEAKER

■ FEATURES

- 400W continuous, 1600W peak power handling.
- Passive 2-Way high-output full-range.
- Italian (B&C) 1 inch exit HF compression driver with HF protection.
- Italian (B&C) 12 inch LF transducer with weather protected cone.
- Unique rotatable 60° x 40° constant-directivity horn.



ENCORE FULL RANGE EM15

1X15 INCH LF + 1 INCH HF 2 WAY FULL-RANGE LOUDSPEAKER

■ FEATURES

- 600W continuous, 2000W peak power handling.
- Passive 2-Way High-Output Full-range.
- Italian (B&C) 1 inch exit titanium HF driver with HF protection.
- Italian (B&C) 15 inch LF transducer with weather protected cone.
- Unique rotatable 60° x 40° constant-directivity horn.



ENCORE FULL RANGE EM15 HP

1X15 INCH LF + 1 INCH HF 2 WAY FULL-RANGE LOUDSPEAKER

■ FEATURES

- 1000W continuous, 3600W peak power handling.
- Compact multipurpose design.
- Passive 2 way very high-output full range.
- Italian (B&C) 1.4 inch exit compression driver for high power and performance.
- Italian (B&C) 15 inch long excursion high power woofer with weather protected cone.



ENCORE FULL RANGE **EM25 HP-V2**

2X15 INCH LF + 1.4 INCH HF 2 WAY FULL-RANGE LOUDSPEAKER

■ FEATURES

- 1800W continuous, 7200W peak power handling.
- Passive 2-way high-output full-range.
- 1.4 inch exit large format B&C compression driver for high power and performance.
- 2 x 15 inch B&C LMF transducer with weather protected cone.
- Vented LF enclosure, solid bass down to 35Hz.

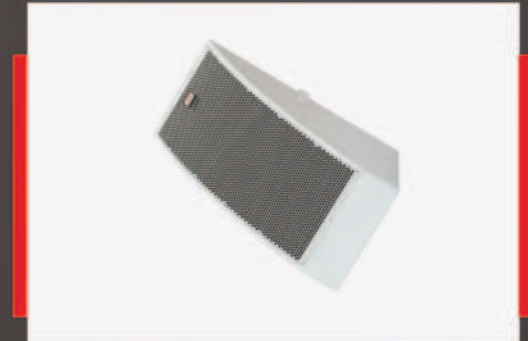


ENCORE FULL RANGE **E112**

1X12 INCH LF + 1 INCH HF 2 WAY FULL-RANGE LOUDSPEAKER

■ FEATURES

- 400W continuous, 1600W peak power handling.
- Passive 2-way high-output full-range.
- Italian (B&C) 1 inch exit HF compression driver with HF protection.
- Italian (B&C) 12 inch LF transducer with weather protected cone.
- Integral M8 threaded points for suspension.



ENCORE SUBWOOFER **E515**

1X15 INCH COMPACT SUBWOOFER

■ FEATURES

- 600W continuous, 2400W peak power handling.
- Very compact design.
- Pole mount to elevate a two-way loudspeaker.
- Direct radiating vented LF enclosure, solid bass down to 35hz.
- 1x15 inch low distortion Italian (B&C) LF transducer.



ENCORE SUBWOOFER **E518**

1X18 INCH COMPACT SUBWOOFER

■ FEATURES

- 1000W continuous, 4000W peak power handling.
- Very compact design with two-way very high-output full range.
- Pole mount to elevate a two-way loudspeaker.
- Direct radiating vented LF enclosure, solid bass down to 30hz.
- 1x18 inch low distortion Italian LF transducer with weather protected cone.



ENCORE SUBWOOFER **E520**

2X18 INCH BASS REFLEX SUBWOOFER

■ FEATURES

- 2000W continuous, 8000W peak power handling.
- Direct radiating vented LF enclosure, solid bass down to 28Hz.
- 2 x 18-inch low distortion Italian LF transducers with weather protected cone.
- Very High SPL coupled with clean and precise low frequency.
- Compact and easy to transport.



ENCORE

TECHNICAL SPECIFICATIONS	EM12	EM12	EM15	EM 15 HP
TYPE	Two-way compact/monitor (full-range)	Two-way Full range /monitor	Two-way compact/monitor (full-range)	Two-way compact (full-range)
FREQUENCY RANGE	50Hz-19kHz	50Hz-18kHz	41Hz-19kHz	39Hz-19kHz
DRIVERS LF	1 x 12 inch reflex-loaded direct radiator	1 x 12 inch reflex-loaded direct radiator	1 x 15 inch reflex-loaded direct radiator	1 x 15 inch reflex-loaded direct radiator
DRIVERS HF	1 x 1 inch exit HF compression driver, horn loaded	1 x 1 inch exit HF compression driver, horn loaded	1 x 1 inch exit HF compression driver, horn loaded	1 x 1.4 inch exit HF compression driver, horn loaded
RATED POWER	400W AES, 1600W peak	400W AES, 1600W peak	600W AES, 2000W peak	1000W AES, 4000W peak
SENSITIVITY	98 dB	98 dB	100dB	98dB
MAXIMUM SPL (CALCULATED @ 1M)	119dB continuous, 125dB peak	119dB continuous, 125dB peak	123dB continuous, 129dB peak	126dB continuous, 132dB peak
NOMINAL IMPEDANCE	8 ohms	8 ohms	8 ohms	8 ohms
DISPERSION (-6db)	Variable	60° horizontal x 40° vertical (Rotatable)	60° horizontal x 40° vertical (Rotatable)	75° horizontal x 50° vertical
CROSSOVER	1.6kHz (Passive)	1.6kHz (Passive)	1.6kHz (Passive)	1.5kHz (Passive)
ENCLOSURE	BWP ply construction	Trapezoid, BWP ply construction	Trapezoid, BWP ply construction	Trapezoid, BWP ply construction
FINISH	Lloyd Lee Co. weather resistant textured paint cover	Lloyd Lee Co. weather resistant textured paint cover	Lloyd Lee Co. weather resistant textured paint cover	Lloyd Lee Co. weather resistant textured paint cover
PROTECTIVE GRILLE	Perforated Steel Powder Coated, 16G.	Perforated Steel Powder Coated, 16G.	Perforated Steel Powder Coated, 16G.	Perforated Steel Powder Coated, 16G.
CONNECTORS	2 x Neutrik NL4	2 x Neutrik NL4	2 x Neutrik NL4	2 x Neutrik NL4
DIMENSIONS	356 mm x 504 mm x 695 mm (WxHxD)	398 mm x 621 mm x 338 mm (WxHxD)	462 mm x 706 mm x 371 mm (WxHxD)	463 mm x 772 mm x 399 mm (WxHxD)
WEIGHT	27kg (Approx)	21kg (Approx)	29kg (Approx)	36kg (Approx)

TECHNICAL SPECIFICATIONS	EM 25HP-V2	ES 15	ES 10	ES 20
TYPE	Two-way compact (full-range)	Subwoofer	Subwoofer	Subwoofer
FREQUENCY RANGE	35Hz-19kHz	35Hz-120Hz	30Hz-250kHz	28Hz-250kHz
DRIVERS LF	2 x 15 inch reflex-loaded direct radiator	1 x 15 inch reflex-loaded direct radiator	1 x 18 inch reflex-loaded direct radiator	2 x 18 inch reflex-loaded direct radiator
DRIVERS HF	1 x 1.4 inch exit HF compression driver, horn loaded	NA	NA	NA
RATED POWER	1800W AES, 7200W peak	600W AES, 1800W peak	1000W AES, 4000W peak	2000W AES, 8000W peak
SENSITIVITY	109 dB	98 dB	98 dB	101dB
MAXIMUM SPL (CALCULATED @ 1M)	129dB continuous, 135dB peak	120dB continuous, 126dB peak	125dB continuous, 131dB peak	128dB continuous, 134dB peak
NOMINAL IMPEDANCE	4 ohms	8 ohms	8 ohms	4 ohms
DISPERSION (-6db)	70° horizontal x 50° vertical	NA	NA	NA
CROSSOVER	1.5kHz (Passive)	NA	NA	NA
ENCLOSURE	Trapezoid, BWP ply construction	Rectangular, BWP ply construction	Rectangular, BWP ply construction	Rectangular, BWP ply construction
FINISH	Lloyd Lee Co. weather resistant textured paint cover	Lloyd Lee Co. weather resistant textured paint cover	Lloyd Lee Co. weather resistant textured paint cover	Lloyd Lee Co. weather resistant textured paint cover
PROTECTIVE GRILLE	Perforated Steel Powder Coated, 16G.	Perforated Steel Powder Coated, 16G.	Perforated Steel Powder Coated, 16G.	Perforated Steel Powder Coated, 16G.
CONNECTORS	2 x Neutrik NL4	2 x Neutrik NL4	2 x Neutrik NL4	2 x Neutrik NL4
DIMENSIONS	- mm x - mm x - mm (WxHxD)	460 mm x 554 mm x 490 mm (WxHxD)	547 mm x 686 mm x 579 mm (WxHxD)	547 mm x 1080 mm x 697 mm (WxHxD)
WEIGHT	58kg (Approx)	32kg (Approx)	52kg (Approx)	80kg (Approx)

Note: Specifications are subject to change without prior notice.

LLOYD LEE CO.

Mobile: 9833374789/9820307275
Email Add: sales@lloydleecompany.com
Website: www.lloydleecompany.com

EXTREME

SERIES

HIGH SPL SYSTEMS



SINCE 1979

EXTREME

HIGH SPL SYSTEMS

LOADED WITH CUSTOM BUILT
ITALIAN LOUDSPEAKERS



EXTREME signifies the birth of a new range of speaker systems from the Lloyd Lee Company. Designed for very high sound pressure levels (SPL), EXTREME systems will amaze you with their performance and power that's way ahead of ordinary speaker systems.

Employing the best in Italian compression drivers and woofers, EXTREME loudspeakers can perform louder and longer with minimal stress on system components. Designed for immense SPL and portability, the EXTREME series is an ideal solution for today's large-scale venues and high-power DJ events.

UNMATCHED POWER

EXTREME FULLRANGE **F1**

2X15 LF + 1X12 INCH MF + 1X1.4 INCH HF, 3-WAY PASSIVE
HIGH-PERFORMANCE MULTIPURPOSE LOUDSPEAKER

■ FEATURES

- High performance 3-way passive full range loudspeaker, 4 ohm nominal impedance.
- All Italian B&C components, high-output all horn design with long throw capability.
- 2 x 15 inch very-high excursion, 1 x 12-inch horn loaded mid-range.
- 1 x 1.4 inch large format compression driver.
- Frequency range 32Hz-18KHz, extended base response and wide horizontal coverage.



EXTREME SYSTEM **XLINER**

VERY HIGH OUTPUT ARRAY-ABLE MID HIGH SPEAKER SYSTEM

■ FEATURES

- 1450W AES horn loaded mid high speaker.
- Very high acoustic output for very compact enclosure with very long throw capacity.
- Specialized mid and high frequency transducers.
- 2x12 inch high performance mid-bas section.
- 2x1.4 inch exit large format high efficiency compression drivers for precise performance.



EXTREME SYSTEM **R-ONE**

HIGH PERFORMANCE 2X18 INCH HORN LOADED SUBWOOFER SYSTEM

■ FEATURES

- 3600W AES, 14400W peak power handling.
- High efficiency and high output design.
- Dual-vented horn subwoofer system with a long throw capability.
- 2x18 inch cutting-edge technology with Italian woofers.
- Frequency range 27hz-140hz driver.



EXTREME GOLD SYSTEM **GOLDLINE +**

VERY HIGH OUTPUT ARRAY-ABLE MID HIGH SPEAKER SYSTEM

■ FEATURES

- 1800w AES horn loaded mid high speaker.
- Very high acoustic output for very compact enclosure.
- Specialized mid and high frequency transducers. Very Long throw.
- 2x12 inch high performance mid-bas section.
- 4x1.4 inch exit large format high efficiency compression drivers.



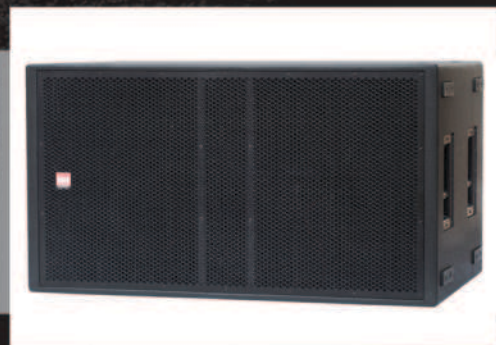
& PERFORMANCE

EXTREME POWERSUB **P-ONE**

VERY HIGH PERFORMANCE 2X21 INCH SUBWOOFER SYSTEM

■ FEATURES

- 4000W AES, 14400W peak power handling.
- High efficiency & very high output design.
- Excellent Low Frequency Response.
- 2 x 21 inch very high excursion, high power Italian woofers.
- Dual vented horn subwoofer system with long throw capability.



EXTREME ULTRA SYSTEM **ULTRALINE +**

EXTREMELY HIGH OUTPUT ARRAY-ABLE MID HIGH SPEAKER SYSTEM

■ FEATURES

- 3200w AES horn loaded mid high speaker.
- Very high acoustic output for very compact enclosure & very long throw.
- Specialized mid and high frequency transducers.
- 4x12 inch high performance mid-bass section.
- 6x1.4 inch exit high efficiency Neodymium compression drivers.



EXTREME SUBWOOFER **N-ONE**

EXTREMELY HIGH PERFORMANCE 2X21 INCH HORN LOADED SUBWOOFER SYSTEM

■ FEATURES

- 4000W AES, 12000w Peak.
- High efficiency very high power design.
- Excellent low frequency response.
- 2 x 21 inch cutting edge technology Italian woofers.
- Frequency range 25Hz-140Hz.



EXTREME

TECHNICAL SPECIFICATIONS	FI	XLINE*	GOLDLINE*	ULTRA LINE*
TYPE	3 way full range (Horn Loaded)	Two-way mid-high horn loaded	Two-way mid-high horn loaded	Two-way mid-high horn loaded
FREQUENCY RANGE	32Hz-18Hz	120Hz-18kHz	120Hz-18kHz	120Hz-18kHz
DRIVERS LF	2 X 15 inch Horn Loaded	2 x 12 inch Horn Loaded	2 x 12 inch Horn Loaded	4 x 12 inch Horn loaded
DRIVERS MF	1 x 12 inch Horn Loaded	NA	NA	NA
DRIVERS HF	1 x 1.4 inch Horn Loaded	2 x 1.4 inch exit HF compression driver, Horn Loaded	4 x 1.4 inch exit HF compression driver, Horn Loaded	6 x 1.4 inch exit HF compression driver, horn loaded
RATED POWER	LF :1400W AES, 4400W peak MF: 400W AES, 1200W peak HF: 120W AES, 400W peak	MF: NA LMF: 1200W AES, 4000W peak HF: 240W AES, 880W peak	MF: NA LMF: 1200W AES, 4000W peak HF: 480W AES, 1920W peak	MF: NA LMF 2400W AES, 8000W peak HF: 720W AES, 3600W peak
SENSITIVITY	LF: 102dB MF: 102dB HF: 109dB	LMF: 108 dB MF: NA HF: 115 dB	LMF: 108 dB MF: NA HF: 118 dB	LMF 110 dB MF: NA HF: 117 dB
MAXIMUM SPL (CALCULATED @ 1M)	LMF: 127dB continuous ,133dB peak HF: NA	LMF: 136dB continuous, 142dB peak HF: 144dB continuous, 150dB peak	LMF: 134dB continuous, 140dB peak HF: 146dB continuous, 152dB peak	LMF: 141dB continuous, 147dB peak HF: 148dB continuous, 154dB peak
NOMINAL IMPEDANCE	4 ohms NA	LMF 2x 8 ohms HF 2x8 ohms	LMF 2x 16 ohms HF 2x 16 ohms	LMF 2 x 8 ohms HF 2 x 8 ohms
DISPERSION (-6db)	70° horizontal x 50° vertical	100° horizontal x 10° vertical	100° horizontal x 15° vertical	100° horizontal x 10° vertical
CROSSOVER	3 way (Passive)	1.7kHz (Active)	1.7kHz (Active)	1.2kHz active
ENCLOSURE	Rectangular, BWP ply construction	Rectangular, BWP ply construction	Rectangular, BWP ply construction	Rectangular, BWP ply construction
FINISH	Lloyd Lee Co. weather resistant textured paint cover	Lloyd Lee Co. weather resistant textured paint cover	Lloyd Lee Co. weather resistant textured paint cover	Lloyd Lee Co. weather resistant textured paint cover
PROTECTIVE GRILLE	Perforated Steel Powder Coated, 16G.	Perforated Steel Powder Coated, 16G.	Perforated Steel Powder Coated, 16G.	Perforated Steel Powder Coated, 16G.
CONNECTORS	2 x Neutrik NL4	2 x Neutrik NL8	2 x Neutrik NL8	2 x Neutrik NL8
DIMENSIONS	566 mm x 1219 mm x 615 mm (WxHxD)	— mm x — mm x — mm (WxHxD)	1219 mm x 370 mm x 617 mm (WxHxD)	1219 mm x 470 mm x 788 mm (WxHxD)
WEIGHT	80kg (Approx)	85kg (Approx)	92kg (Approx)	116kg (Approx)

TECHNICAL SPECIFICATIONS	EXTREME R-ONE*	POWERED SUB (P-ONE)	N-ONE	
TYPE	Horn Loaded Subwoofer	Horn loaded Subwoofer	Horn Loaded Subwoofer	
FREQUENCY RANGE	27Hz-140Hz	27Hz-160Hz	25Hz-140kHz	
DRIVERS LF	2 x 18 inch, Horn Loaded	2 X 21 Inch Reflex Horn Loaded	2 X 21 Inch Horn Loaded	
RATED POWER	3600W AES, 14400W peak	LF : 4000W AES, 14400 W peak	LF :4000W AES	
SENSITIVITY	104dB	LF :104dB	LF : 104 dB	
MAXIMUM SPL (CALCULATED @ 1M)	139dB continuous, 145dB peak	142dB continuous,148dB peak	LF : 143dB continuous, 149dB peak	
NOMINAL IMPEDANCE	4 ohms	4 ohms	4 ohms	
ENCLOSURE	Rectangular , BWP ply construction	Rectangular, BWP ply construction	Rectangular, BWP ply construction	
FINISH	Lloyd Lee Co. weather resistant textured paint cover	Lloyd Lee Co. weather resistant textured paint cover	Lloyd Lee Co. weather resistant textured paint cover	
PROTECTIVE GRILLE	Perforated Steel Powder Coated, 16G.	Perforated Steel Powder Coated, 16G.	Perforated Steel Powder Coated, 16G.	
CONNECTORS	2 x Neutrik NL4	2 x Neutrik NL4	2 x Neutrik NL4	
DIMENSIONS	---	1219 mm x 670 mm x 799 mm (WxHxD)	1221mm x 672mm x 1000mm (WxHxD)	
WEIGHT	113 Kg (Approx)	121kg (Approx)	145 kg (Approx)	

Note: Specifications are subject to change without prior notice.

LLOYD LEE CO.

Mobile: 9833374789/9820307275
Email Add: sales@lloydleecompany.com
Website: www.lloydleecompany.com

EARTHQUAKE

SERIES

HIGH PERFORMANCE SUBWOOFERS



SINCE 1979

EARTHQUAKE

HIGH PERFORMANCE SUBWOOFERS

The EARTHQUAKE Series subwoofers are extremely powerful subwoofers capable of producing very high-pressure level over a long duration of time. It is the ideal partner for EDGE-X and EXTREME arrays where maximum low frequency output is required.

The EARTHQUAKE Series Hybrid horn-reflex loading design combines the acoustic efficiency and impact of bass horn technology with the low frequency extension of a reflex design, hence increasing the performance of the subwoofer at even the lower frequencies.

The EARTHQUAKE R-ONE, POWERSUB P-ONE, SUPERSUB S-ONE and ULTRASUB U-ONE are suitable for both live and recorded music applications. Their capacity to reproduce very high levels of sub - low frequencies with extraordinary definition, makes them one of the most powerful and versatile subwoofers in their category.

LOADED WITH CUSTOM BUILT
ITALIAN LOUDSPEAKERS



MAXIMUM IMPACT

EXTREME SUBWOOFERS **B-ONE**

HIGH PERFORMANCE 2x18 INCH HORNLOADED SUBWOOFER

■ FEATURES

- High Efficiency, Very High-power design
- 2600W AES, 10400W peak power handling
- Excellent Low Frequency Response
- 2 x 18 inch Cutting edge technology Italian woofers
- Frequency range 29Hz-140Hz
- Dual Vented horn subwoofer system with long throw capability
- 4 ohm nominal impedance
- Enclosure is Stackable in Both Horizontal and Vertical Orientations



EXTREME SUBWOOFERS **R-ONE+**

HIGH PERFORMANCE 2X18 INCH HORN LOADED SUBWOOFER SYSTEM

■ FEATURES

- High Efficiency, Very High power design
- 3600W AES, 14400W peak power handling
- Excellent Low Frequency Response
- 2 x 18 inch Cutting edge technology Italianwoofers
- Frequency range 27Hz-140Hz
- Dual Vented horn subwoofer system with long throw capability
- 4 ohm nominal impedance
- Enclosure is Stackable in Both Horizontal and Vertical Orientations



EXTREME SUBWOOFERS **P-ONE**

HIGH PERFORMANCE 2X21 INCH HORN LOADED SUBWOOFER

■ FEATURES

- 4000W AES, High efficiency and High output design.
- Dual Vented horn subwoofer system with long throw capability
- 2x 21 inch very-high excursion, high power Italian bass drivers
- Frequency range 27Hz-160Hz
- Enclosure is stackable in both Horizontal and vertical orientations

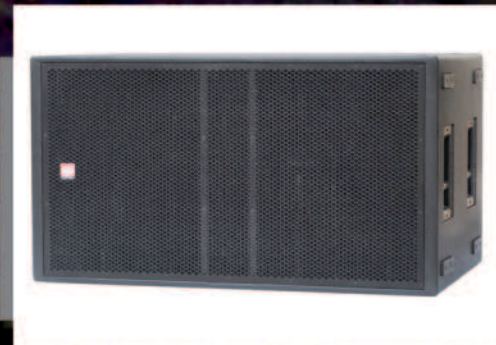


HIGH POWER SUBWOOFER SYSTEM **S-ONE**

HIGH PERFORMANCE 2x21 INCH HORNLOADED SUBWOOFER

■ FEATURES

- *High Efficiency, Very High-power design*
- *4800W AES, 19200W peak power handling*
- *Excellent Low Frequency Response*
- *2 x 21 inch Cutting edge technology Italian woofers*
- *Frequency range 25Hz-140Hz*
- *Dual Vented horn subwoofer system with long throw capability*
- *4 ohm nominal impedance*
- *Enclosure is Stackable in Both Horizontal and Vertical Orientations*



EXTREME HIGHPOWER SUBWOOFERS **N-ONE**

VERY HIGH PERFORMANCE 2X21 INCH SUBWOOFER SYSTEM

■ FEATURES

- *4000W AES, High efficiency and High output design.*
- *Dual Vented horn subwoofer system with long throw capability*
- *2x 21 inch very-high excursion, high power Italian bass drivers*
- *Frequency range 27Hz-160Hz*
- *Enclosure is stackable in both Horizontal and vertical orientations*



EXTREME HIGH POWER SUBWOOFERS **H-ONE**

EXTREMELY HIGH PERFORMANCE 2X21 INCH (4Ω + 4Ω) HORN LOADED SUBWOOFER SYSTEM

■ FEATURES

- *4800W AES, (LF1=2400W 4Ω + LF2=2400W 4Ω)*
- *High efficiency & very high output design.*
- *Excellent Low frequency response.*
- *2x21-inch very high excursion, high power italian woofers.*
- *Dual vented horn subwoofer system with long throw capability.*
- *Frequency range 25Hz - 140Hz*



EARTHQUAKE

TECHNICAL SPECIFICATIONS	EXTREME R-ONE+	POWERSUB P-ONE	N-ONE	H-ONE
TYPE	Horn Loaded Subwoofer	Horn Loaded Subwoofer	Horn Loaded Subwoofer	Horn Loaded Subwoofer
FREQUENCY RANGE	27Hz-140Hz	27Hz-160Hz	25Hz-140Hz	25Hz-140Hz
DRIVER LF	2 x 18 inch, Horn Loaded	2 x 21 inch Reflex Horn Loaded	2 x 21 inch, Horn Loaded	2 x 21 inch, Horn loaded
RATED POWER	3600W AES, 14400W peak	4000W AES, 14400 W peak	4000W AES, 16000W peak	4800W AES, (LF1=2400W + LF2=2400W)
SENSITIVITY	104dB	104dB	104dB	104dB
MAXIMUM SPL (CALCULATED @ 1M)	139dB continuous, 145dB peak	142dB continuous, 148dB peak	143 dB continuous, 149 dB peak	145dB continuous, 151dB peak
NOMINAL IMPEDANCE	4 ohms	4 ohms	4 ohms	4 ohms + 4 ohms
ENCLOSURE	Rectangular , BWP ply construction	Rectangular , BWP ply construction	Rectangular , BWP ply construction	Rectangular , BWP ply construction
FINISH	Lloyd Lee Co. weather resistant textured paint cover	Lloyd Lee Co. weather resistant textured paint cover	Lloyd Lee Co. weather resistant textured paint cover	Lloyd Lee Co. weather resistant textured paint cover
PROTECTIVE GRILLE	Perforated Steel Powder Coated, 16G.	Perforated Steel Powder Coated, 16G.	Perforated Steel Powder Coated, 16G.	Perforated Steel Powder Coated, 16G.
CONNECTORS	2 x Neutrik NL4	2 x Neutrik NL4	2 x Neutrik NL4	2 x Neutrik NL4
DIMENSIONS	---	1219 mm x 670 mm x 799 mm (WxHxD)	1221mm x 672mm x 1000mm (WxHxD)	1221mm x 672mm x 1000mm (WxHxD)
WEIGHT	113 Kg (Approx)	121 kg (Approx)	145 kg (Approx)	145 kg (Approx)

NOTE: SPECIFICATIONS ARE SUBJECT TO CHANGE WITHOUT PRIOR NOTICE.

LLOYD LEE CO.

Mobile: 9833374789/9820307275
Email Add: sales@lloydleecompany.com
Website: www.lloydleecompany.com

EVOQUE

SERIES

CLUB / DISCOTHEQUE / LOUNGE SYSTEMS



LLOYD
LEE
COMPANY
PRO SOUND
SINCE 1979

EVOQUE

CLUB / DISCOTHEQUE / LOUNGE SYSTEMS

LOADED WITH CUSTOM BUILT
ITALIAN LOUDSPEAKERS



EVOQUE custom designed installs are more than sound systems; they are perpetual marketing tools for your venue. A system that never fails to impress your customers is worth far more than the cost of the system. EVOQUE systems are crafted not only to deliver top-notch sound, but also reliability for rock-solid performances year after year.

Lloyd Lee Co. enjoys an unmatched reputation in the night club scene having successfully integrated custom designs and standard product lines that have been acknowledged by many. Be it an extraordinary music event or extravagant venue layout, it takes various elements of attraction to achieve the desired effect. Sound is the core and one of the most important aspects of an event. We believe

that providing audiences with an exceptional sound experience, evokes the desire in people to continually visit venues for that same awesome feeling. We achieve this by paying attention to every detail on the professional sound systems acoustic performance, which combines accurate system design along with perfect room acoustics.

RELIABILITY FOR ROCK

EVOQUE LINE **S**

1X8 INCH LF + 1.4 HF INCH 2 WAY LINE ARRAY SPEAKER

■ FEATURES

- 300W AES, 1200W peak, constant curvature line array system.
- Very high output coupled with clean and precise sound reproduction.
- Fast, integral, high strength rigging system.
- 1x8 inch Italian 300W high performance mid-bass speaker.
- 1x1.4 inch exit B&C compression driver for power and performance.



EVOQUE LINE **BF**

1X8 INCH LF + 1.4 HF INCH 2 WAY LINE ARRAY SPEAKER

■ FEATURES

- 300W AES, 1200W peak, constant curvature line array system.
- Very high output coupled with clean and precise sound reproduction.
- Fast, integral, high strength rigging system.
- 1x8 inch Italian 300W high performance mid-bass speaker.
- 1x1.4 inch exit B&C compression driver for power and performance.



EVOQUE SATELLITE **S**

1X 8 INCH LF + 1 INCH HF 2 WAY FULL-RANGE LOUDSPEAKER

■ FEATURES

- 300W continuous, 1200W peak power handling.
- Passive 2 way high-output full-range.
- 8 inch Italian LF transducer.
- Ultra-compact multipurpose design.
- Unique elliptical horn.



EVOQUE SATELLITE 10

1X10 INCH LF + 1 INCH HF 2 WAY FULL-RANGE LOUDSPEAKER

■ FEATURES

- 350W continuous, 1200W peak power handling.
- Passive 2 way high-output full-range.
- 1 inch exit pure titanium B&C HF compression driver.
- Specialised B&C 10 inch LF transducer with weather protected cone.
- Ultra-compact multipurpose design.



SOLID PERFORMANCE

EVOQUE MODULE 12

1X12 INCH LF + 1.4 INCH HF 2 WAY FULL-RANGE LOUDSPEAKER

■ FEATURES

- 700W AES, 2800W peak power handling.
- Compact multipurpose design.
- Passive 2 way very high-output full range.
- 1.4 inch exit B&C compression driver for high power and precise vocal reproduction.
- 12 inch long excursion high power B&C woofer with weather protected cone.



EVOQUE SUBWOOFER 15

1X15 INCH COMPACT SUBWOOFER

■ FEATURES

- 600W continuous, 2400W peak power handling, 8 ohms.
- Very compact design.
- pole mount to elevate two-way loudspeaker.
- Direct radiating Vented LF enclosure, solid bass down to 35hz.
- 15 inch low distortion B&C LF transducer with weather protected cone.



EVOQUE SUBWOOFER 18

1X18 INCH SUBWOOFER SYSTEM

■ FEATURES

- 1200W AES, 4000W peak power handling, 8 ohms.
- Extended low frequency reproduction and excellent transient response.
- 18 inch cutting edge technology with B&C woofer for extremely high-power.
- Very compact design with pole mount to elevate two-way loudspeaker.
- Enclosure is stackable in both horizontal and vertical orientations.



EVOQUE

TECHNICAL SPECIFICATIONS	LINE 8	LINE 8F	MODULE 12	SATELLITE 8
TYPE	Two-way, compact line array module	Two-way, compact line array module	Two-way compact (full-range)	Two-way compact (full-range)
FREQUENCY RANGE	60Hz-18kHz	60Hz-18kHz	55Hz-19kHz	75Hz-18kHz
DRIVERS LF	1 x 8 inch reflex-loaded direct radiator	1 x 8 inch reflex-loaded direct radiator	1 x 12 inch reflex-loaded direct radiator	1 x 8inch reflex-loaded direct radiator
DRIVERS HF	1 x 1.4 inch exit HF compression driver, horn loaded	1 x 1.4 inch exit HF compression driver, horn loaded	1 x 1.4 inch exit HF compression driver, horn loaded	1 x 1 inch exit HF compression driver, horn loaded
RATED POWER	Passive: 300W AES, 1200W Peak LMF: 300W AES, 1200W Peak HF: 80W AES, 320W Peak	Passive: 300W AES, 1200W peak LMF: 300W AES, 1200W peak HF: 80W AES, 320W peak	Passive: 700W AES, 2000W peak LMF: 700W AES, 2800W peak HF: 100W AES, 400W peak	Passive: 300W AES, 800W peak LMF: 300W AES, 1200W peak HF: 40W AES, 160W peak
SENSITIVITY	97 dB	97 dB	100dB	97dB
MAXIMUM SPL (CALCULATED @ 1M)	118dB continuous, 124dB peak	118dB continuous, 124dB peak	126dB continuous, 132dB peak	114dB continuous, 120dB peak
NOMINAL IMPEDANCE	8 ohms	8 ohms	8 ohms	8 ohms
DISPERSION (-6db)	100° horizontal x 15° vertical	60° horizontal x 10° vertical	70° horizontal x 50° vertical (Rotatable)	90° horizontal x 60° vertical
CROSSOVER	1.2kHz (Passive)	1.2kHz (Passive)	1.4kHz (Passive)	1.7kHz (Passive)
ENCLOSURE	Vertical Trapezoid , BWP ply construction	Vertical Trapezoid , BWP ply construction	Trapezoid , BWP ply construction	Trapezoid , BWP ply construction
FINISH	Lloyd Lee Co. weather resistant textured paint cover	Lloyd Lee Co. weather resistant textured paint cover	Lloyd Lee Co. weather resistant textured paint cover	Lloyd Lee Co. weather resistant textured paint cover
PROTECTIVE GRILLE	Perforated Steel Powder Coated, 16G.	Perforated Steel Powder Coated, 16G.	Perforated Steel Powder Coated, 16G.	Perforated Steel Powder Coated, 16G.
CONNECTORS	2 x Neutrik NL4	2 x Neutrik NL4	2 x Neutrik NL4	2 x Neutrik NL4
DIMENSIONS	531 mm x 246 mm x 342 mm (WxHxD)	531 mm x 246 mm x 342 mm (WxHxD)	335 mm x 612 mm x 396 mm (WxHxD)	259 mm x 412 mm x 245 mm (WxHxD)
WEIGHT	19kg (Approx)	19kg (Approx)	29kg (Approx)	12kg (Approx)

TECHNICAL SPECIFICATIONS	SATELLITE 10	SUBWOOFER 15	SUBWOOFER 18	MONITOR 12P
TYPE	Two-way compact/monitor (full-range)	Subwoofer	Subwoofer	Two-way compact (full-range)
FREQUENCY RANGE	60Hz-18kHz	41Hz-120kHz	25Hz-250kHz	55Hz-19kHz
DRIVERS LF	1 x 10 inch reflex-loaded direct radiator	1 x 15 inch reflex-loaded direct radiator	1 x 18 inch reflex-loaded direct radiator	1 x 12 inch reflex-loaded direct radiator
DRIVERS HF	1 x 1 inch exit HF compression driver horn loaded	NA	NA	1 x 1.4 inch exit HF compression driver, horn loaded
RATED POWER	Passive: 350W AES, 2000W Peak LMF: 350W AES, 2800W Peak HF: 80W AES, 320W Peak	600W AES, 2400W peak	1200W AES, 4000W peak	Passive: 700W AES, 2000W peak LMF: 700W AES, 2800W peak HF: 100W AES, 400W peak
SENSITIVITY	99 dB	98 dB	98 dB	100dB
MAXIMUM SPL (CALCULATED @ 1M)	116dB continuous, 122dB peak	120dB continuous, 126dB peak	127dB continuous, 133dB peak	126dB continuous, 132dB peak
NOMINAL IMPEDANCE	8 ohms	8 ohms	8 ohms	8 ohms
DISPERSION (-6db)	90° horizontal x 60° vertical (Rotatable)	NA	NA	70° horizontal x 50° vertical (Rotatable)
CROSSOVER	1.7kHz (Passive)	NA	NA	1.4kHz (Passive)
ENCLOSURE	Trapezoid , BWP ply construction	Rectangular, BWP ply construction	Rectangular, BWP ply construction	Trapezoid , BWP ply construction
FINISH	Lloyd Lee Co. weather resistant textured paint cover	Lloyd Lee Co. weather resistant textured paint cover	Lloyd Lee Co. weather resistant textured paint cover	Lloyd Lee Co. weather resistant textured paint cover
PROTECTIVE GRILLE	Perforated Steel Powder Coated, 16G.	Perforated Steel Powder Coated, 16G.	Perforated Steel Powder Coated, 16G.	Perforated Steel Powder Coated, 16G.
CONNECTORS	2 x Neutrik NL4	2 x Neutrik NL4	2 x Neutrik NL4	2 x Neutrik NL4
DIMENSIONS	351 mm x 555 mm x 291 mm (WxHxD)	460 mm x 554 mm x 490 mm (WxHxD)	686 mm x 547 mm x 574 mm (WxHxD)	335 mm x 612 mm x 396 mm (WxHxD)
WEIGHT	16kg (Approx)	32kg (Approx)	47g (Approx)	29kg (Approx)

Note: Specifications are subject to change without prior notice.

LLOYD LEE CO.

Mobile: 9833374789/9820307275
Email Add: sales@lloydleecompany.com
Website: www.lloydleecompany.com

EMERGE

SERIES

PROFESSIONAL STAGE MONITORS



EMERGE

PROFESSIONAL STAGE MONITORS

LOADED WITH CUSTOM BUILT
ITALIAN LOUDSPEAKERS



To create a musical performance, two things have to happen: your audience needs to hear you, and the performers need to hear themselves. If the performers can't hear themselves clearly, how will they know if they are playing or singing well?

Stage monitoring is taken very seriously by top professionals and should be by anyone working right from the concert level down to club gigs. Good monitoring consists of having the right equipment, suitable for the nature of the venue, performance and operating it effectively.

Lloyd Lee Company therefore developed the EMERGE SERIES as a solution to the many challenges faced by performers and engineers in the live sound industry.

REVEAL EVERY DETAIL

EMERGE SERIES PRO MONITOR **SM15** 1X15 INCH LF + 1.4 INCH HF LOW PROFILE STAGE MONITOR

■ FEATURES

- 1000W AES, 4000W Peak, professional, compact low-profile design.
- 100W 1.4 inch exit pure titanium, large format compression driver.
- Superb frequency response, high gain before feedback.
- Weather protected components and wear resistant ergonomic cabinet design for outdoor usage.
- Vented LF enclosure, bass down to 50Hz.



EMERGE SERIES PRO MONITOR **SM12** 1X12 INCH LF + 1.4 INCH HF LOW PROFILE STAGE MONITOR

■ FEATURES

- 700W AES, 2800W Peak, professional compact low-profile design.
- 80W 1.4 inch exit pure titanium, large format compression driver.
- Superb frequency response. High Gain before Feedback.
- Weather protected components and wear resistant ergonomic cabinet design for out-door use.
- Vented LF enclosure, bass down to 59Hz.



TECHNICAL SPECIFICATIONS	SM15	SM12
TYPE	Two-way compact (full-range)	Two-way compact (full-range)
FREQUENCY RANGE	50Hz-19kHz	59Hz-19kHz
DRIVERS LF	1 x 15inch reflex-loaded direct radiator	1 x 12inch reflex-loaded direct radiator
DRIVERS HF	1 x 1.4-inch exit HF compression driver horn loaded	1 x 1.4-inch exit HF compression driver horn loaded
RATED POWER	1000W AES, 4000W peak	700W AES, 2800W peak
SENSITIVITY	98 dB	101dB
MAXIMUM SPL (CALCULATED @ 1M)	128dB continuous, 134dB peak	126dB continuous, 130dB peak
NOMINAL IMPEDANCE	8 ohms	8 ohms
DISPERSION (-6db)	50° horizontal x 90° vertical	50° horizontal x 90° vertical
CROSSOVER	1.2kHz (Passive)	1.2kHz (Passive)
CONNECTORS	2 x Neutrik NL4	2 x Neutrik NL4
DIMENSIONS	630 mm x 432 mm x 326 mm (W x H x D)	630 mm x 432 mm x 326 mm (W x H x D)
WEIGHT	31kg (Approx)	26kg (Approx)

Note: Specifications are subject to change without prior notice.

LLOYD LEE CO.

Mobile: 9833374789/9820307275
Email Add: sales@lloydleecompany.com
Website: www.lloydleecompany.com

ELECTRON

SERIES

POWERED SPEAKER SYSTEMS



ELECTRON

POWERED SPEAKER SYSTEMS

LOADED WITH CUSTOM BUILT
ITALIAN LOUDSPEAKERS



The ELECTRON series powered loudspeakers were developed after years of on field experience and knowledge to understand the demands of audio professional for a powered loudspeaker that possesses very high performance and rock-solid reliability in any application.

Powered systems should not be only portable, but they should be user-friendly and reliable, delivering high power and quality sound with no compromise for many years. Based on a powerful combination of World class European speakers, Unique designs and State-of-the-art DSP based power amp modules the ELECTON series surprises you with unmatched performance.

ELECTRON series are equipped with the specialised PM2000 module that is equipped with a European 2 Ch 1000w@ 4ohms class D amplifier with an on board 2 Ch world-class DSP that makes the systems sound excellent and extremely reliable. Located on the rear of each enclosure push-to-select functionality with a total of 8 pre-optimised settings are available. The M15A, FR25A and SB18A powered speakers can be configured in a variety of ways, from Install sound to portable small to medium scale live or recorded music events.

POWERED PERFORMANCE

ELECTRON **M15A**

1000W POWERED 15-INCH + 1.4-INCH HF 2-WAY MONITOR & TOP FULL-RANGE SPEAKER SYSTEM

■ FEATURES

- Two channel Class D amplifier, dedicated LF + HF drive.
- State-of-the-art DSP Engine for excellent sound quality.
- 15-inch 900w high performance woofer in bass reflex design.
- 1x1.4" 100w Exit large format compression driver.
- European world class speakers for superior performance and durability.
- Multipurpose design to be used as Monitor & Top



ELECTRON **FR25A**

1800W POWERED DUAL 15-INCH + 1.4-INCH HF 3-WAY FULL-RANGE SPEAKER SYSTEM (Bi-amp)

■ FEATURES

- Two channel Class D amplifier dedicated LF + MHF drive. (Bi-amp)
- State-of-the-art DSP Engine for excellent sound quality.
- 2x15-inch 900w high performance woofer in bass reflex design.
- 1x1.4" 100w Exit large format compression driver.
- European world class speakers for superior performance and durability.
- Vented LF enclosure, solid bass down to 55Hz



ELECTRON **SB18A**

1200W POWERED SINGLE 18-INCH HIGH OUTPUT FRONT LOADED SUB-WOOFER

■ FEATURES

- 2000W Class D amplifier.
- State-of-the-art DSP Engine for excellent sound quality.
- Direct radiating Vented LF enclosure, solid bass down to 30Hz.
- European world class speakers for superior performance and durability.
- Pole mount to elevate to a two-way loudspeaker.
- Compatible with M15A & FR25A and wide variety of other speakers.



ENIGMA

SERIES

DIGITAL LOUDSPEAKER PROCESSORS



ENIGMA

DIGITAL LOUDSPEAKER PROCESSORS

Every good loudspeaker system needs an equally good loudspeaker processor. To achieve the best performance from its loudspeakers, Lloyd Lee Company has collaborated with one of the world's leading digital loudspeaker processor manufacturer to make the Enigma series of specialised processors for our systems. Enigma digital loudspeaker processor series consists of 3 models :

- Enigma 26i for all entry level install and live sound applications.

- Enigma 26 pro and 48 pro are specially designed for thigh end sonic performance and reliability . Both processors are ideal for top notch Install and Live sound applications.

These processors have world class DSP engines, excellent low noise preamps , high quality D-A converters and precise software to ensure a large list of features and guarantees excellent sonic performance in the most demanding applications.

ENIGMA 26i is a cost-effective 2-IN/6-OUT digital speaker management system. Designed to be catered for any crossover configuration, it provides the suitable processing and control for live application use. It offers 2 analog inputs, and 6 analog outputs, managed by a powerful DSP Engine, in addition to 24 Bit AD/DA Converters. Each input channel provides a choice of EQ with a 31-band Parametric EQ, gain control, noise gate function, RMS Compressor, Internal White/Pink Noise Generator and configurable delay. Each output offers up to 7-band of parametric equalization into the crossover filters which themselves provide slopes from 6dB/Octave up to 48dB/Octave. Each output path also features peak limiter and driver alignment delay.

ENIGMA 26pro is a digital audio processor newly designed for Lloyd Lee Company. It has extremely low noise floor, high dynamic range and powerful internal DSP to cover most of the usage scenarios. Whether in meeting rooms, theatres, touring performances, or even large-scale tours, you can use the A series processors. Advanced circuit design and original DSP algorithm are the core of pure and high-quality sound.

ENIGMA 48pro is a digital audio processor newly designed for Lloyd Lee Company. It has extremely low noise floor, high dynamic range and powerful internal DSP to cover most of the usage scenarios. Whether in meeting rooms, theatres, touring performances, or even large-scale tours, you can use the A series processors. Advanced circuit design and original DSP algorithm are the core of pure and high-quality sound. In the signal processing part of ENIGMA 48pro, the DSP and AD/DA converters are running at 96KHz sampling rate, complete processing functions provide a complete speaker Crossover solution.

EXCELLENT

ENIGMA 26i

HIGH PERFORMANCE 2-IN/6-OUT DIGITAL LOUDSPEAKER PROCESSOR

■ FEATURES

1. Outstanding Performance Excellent sonic performance with 24bit high end converters coupled with 96kHz sample rate
2. 2 inputs, 6 outputs with full matrix mixing Top-grade DSP Engine 31 band parametric equalization per input channel
3. 7 band parametric equalization per output channel
4. Each band can be switched to Bell, Low/High Shelving with variable Q response
5. Crossover filters with slopes from 6dB/Octave up to 48dB/Octave including Butterworth, Bessel, Linkwitz-Riley
6. Each output features a dynamic range controller composed of a Peak Limiter.
7. Adjustable Delay time up to 900 ms for every input channel, and up to 340 ms for every output channel
8. Phase correction per output channel Direct PC/Network Connection Rear panel USB connector for direct PC communications
9. RS485 connection for system setup, monitoring and control via fully manageable remote
10. PC software Control Front panel interactive LCD display for local access and configuration
11. Front panel 7-LED level meter indicators per channel
12. Simultaneous control up to 32 units via PC software
13. Up to 32 storable user presets
14. Security Lockout



ENIGMA 26 PRO

HIGH PERFORMANCE 2-IN/6-OUT DIGITAL LOUDSPEAKER PROCESSOR

■ FEATURES

1. The machine runs at 96KHz sampling rate, the frequency response remains flat at 20-40Khz, the background noise is as low as -94dBu, and the maximum input level reaches +20dBu.
2. Full matrix mixing, any input channel can be sent to the output channel, and even several non-adjacent output channels can be superimposed and mixed to the physical output.
3. Each input and output channel is equipped with an RMS compressor, which can control the signal dynamics on the input channel or use it to shape the sound intensity. The newly designed extremely low distortion peak limiter can prevent sudden large dynamic signals from damaging the speaker unit and effectively guarantee the safety of the system.
4. Each channel is equipped with FIR filter up to 1024 Taps.
5. New MIR linear phase crossover filter: MIR linear phase filter is a new X-over filter, which has the shape of a classic filter (LR24/48) without any phase distortion and keeps the phase curve flat straight.
6. The machine is equipped with a standard network port, which can be directly connected to a PC through a network cable. The default DHCP automatically obtains an IP address and completes all connections with one click.
7. The new marshalling setting can control 32 processors at the same time, and can control gain, mute, PEQ and polarity uniformly, which increases the convenience of multi-machine debugging.
8. The input channel is equipped with a dynamic loudness booster, which can effectively enhance the sense of hearing.
9. Add plug-in, including 96kHz FIR filter with extended bandwidth, high-order signal generator and RTA spectrum analysis.



SONIC PERFORMANCE.

ENIGMA 48 PRO

HIGH PERFORMANCE 4-IN/8-OUT DIGITAL LOUDSPEAKER PROCESSOR

■ FEATURES

1. The machine runs at 96KHz sampling rate, the frequency response remains flat at 20-40Khz, the background noise is as low as -94dBu, and the maximum input level reaches +20dBu.
2. Full matrix mixing, any input channel can be sent to the output channel, and even several non-adjacent output channels can be superimposed and mixed to the physical output.
3. Each input and output channel is equipped with an RMS compressor, which can control the signal dynamics on the input channel or use it to shape the sound intensity. The newly designed extremely low distortion peak limiter can prevent sudden large dynamic signals from damaging the speaker unit and effectively guarantee the safety of the system.
4. Each channel is equipped with FIR filter up to 1024 Taps.
5. New MIR linear phase crossover filter: MIR linear phase filter is a new X-over filter, which has the shape of a classic filter (LR24/48) without any phase distortion and keeps the phase curve flat straight.
6. The machine is equipped with a standard network port, which can be directly connected to a PC through a network cable. The default DHCP automatically obtains an IP address and completes all connections with one click.
7. The new marshalling setting can control 32 processors at the same time, and can control gain, mute, PEQ and polarity uniformly, which increases the convenience of multi-machine debugging.
8. The input channel is equipped with a dynamic loudness booster, which can effectively enhance the sense of hearing.
9. Add plug-in, including 96kHz FIR filter with extended bandwidth, high-order signal generator and RTA spectrum analysis.



TECHNICAL SPECIFICATIONS		ENIGMA 26 PRO	ENIGMA 48 PRO
AUDIO			
Input Impedance	<10k Ohm balanced	<10k Ohm balanced	
Output Impedance	<100R Impedance balanced	<100R Impedance balanced	
A/D dynamic range	118dB	118dB	
D/A dynamic range	118dB	118dB	
Maximum input level	+20dBu	+20dBu	
Maximum output level	+18dBu	+18dBu	
Total harmonic distortion	≤0.003% (+4dBu 1kHz)	≤0.003% (+4dBu 1kHz)	
Frequency response	20Hz – 20kHz; ±0.5dB	20Hz~40kHz	
Crosstalk	≤-95dB	≤-95dB	
Signal to noise ratio	≥113dB (A weighting)	≥113dB (A weighting)	
Noise floor	≤-94dBu (A weighting)	≤-94dBu (A weighting)	
Common Mode Rejection Ratio	60dB	60dB	
Number of analog input channels	2	4	
Number of analog output channels	6	8	
Rs485 control port	2	2	
Network control port	1	1	
DSP Processing			
Signal generator	white noise/pink noise, level range: -30dBu~+10dBu	white noise/pink noise, level range: -30dBu~+10dBu	
input & output gain	-18 dB ~ +12 dB, step accuracy is 0.1dB	-18 dB ~ +12 dB, step 0.1dB	
Noise gate	Threshold range: -80dBu~45dBu Start-up time: 1ms~1000ms; Release time: 1ms~1000ms	Threshold range: -80dBu~45dBu Attack time: 1ms~1000ms; Release time: 1ms~1000ms	
Dynamic loudness filter	Gain range: 0dB-10dB Start-up speed: fast/medium/slow	Gain range: 0dB-10dB Attack speed: fast/medium/slow	
Parametric equalizer	Input channels up to 31 optional types of PEQ output channels up to 8 optional types of PEQ	Input channels up to 31 optional types of PEQ output channels up to 8 optional types of PEQ	
Optional types include	Bell filter, 1st order high Shelf filter, 2nd order high Shelf filter Variable Q high Shelf filter, 1st order low Shelf filter, 2nd order low Shelf filter Variable Q low Shelf filter, 1st-order low-pass filter, 2nd-order low-pass filter Variable Q low pass filter, 1st order high pass filter, 2nd order high pass filter Variable Q high pass filter, band pass filter, notch filter 1st order all pass filter, 2nd order all-pass filter with variable Q value	Bell filter, 1st order high Shelf filter, 2nd order high Shelf filter Variable Q high Shelf filter, 1st order low Shelf filter, 2nd order low Shelf filter Variable Q low Shelf filter, 1st-order low-pass filter, 2nd-order low-pass filter Variable Q low pass filter, 1st order high pass filter, 2nd order high pass filter Variable Q high pass filter, band pass filter, notch filter 1st order all pass filter, 2nd order all-pass filter with variable Q value	
The centre frequency	adjustable within the frequency range of 20Hz~20kHz with a step accuracy of 1Hz	adjustable within the frequency range of 20Hz~20kHz with a step accuracy of 1Hz	
Q value/bandwidth	The Q value range of Bell filter is 0.4~128, the step is 0.01 The range of the Q value of the Chevron/high-pass/low-pass filter is: 0.1~5.1, and the step is 0.01 The value range of bandpass/notch filter Q is: 4~104, step is 1	The Q value range of Bell filter is 0.4~128, the step is 0.01 The range of the Q value of the Chevron/high-pass/low-pass filter is: 0.1~5.1,and the step is 0.01 The value range of bandpass/notch filter Q is: 4~104, step is 1	
Equalizer gain range	-15dB~-+15dB	-15dB~-+15dB	
IIR crossover filter	Butterworth slope: 6/12/18/24/36/48dB per octave Bessel slope: 12/24dB per octave Linkwitz-Riley slope: 12/24/36/48dB per octave NXF horn filter slope is 40/45/50/50/55/60/65/70/75dB per octave	Butterworth slope: 6/12/18/24/36/48dB per octave Bessel slope: 12/24dB per octave Linkwitz-Riley slope: 12/24/36/48dB per octave NXF horn filter slope is 40/45/50/50/55/60/65/70/75dB per octave	
MIR linear phase filter	Linkwitz-Riley: 24/48dB per octave: -40dB per octave	Linkwitz-Riley: 24/48dB per octave,NXF-40per octave	
FIR crossover filter	type; high pass/low pass/band pass/external import Taps range: 256 ~ 512, slope range 21 ~ 120dB per octave Time window type: Rect / Sinc / Keiser /Hanning / Hamming / Blackman / Blackman-Harris/ Blackman-Nuttal / Nuttal/Keiser -Bessel/Sine	type; high pass/low pass/band pass/external import Taps range: 256 ~ 512,slope range 21 ~ 120dB per octave Time window type: Rect / Sinc / Keiser /Hanning / Hamming / Blackman / Blackman-Harris/ Blackman-Nuttal / Nuttal/Keiser -Bessel/Sine	
RMS compressor	Attack range: -10dBu~ +20dBu; Compression ratio range:2~32: 1; Soft and hard inflection point: 0~100% start time:0.1ms~1000ms; Release time: 10ms~15000ms Gain compensation: Maximum 12dB	Starting threshold range: -10dBu~ +20dBu; Compression ratio range:2~32: 1; Soft and hard knee: 0~100% Attack time:0.1ms~1000ms; Release time: 10ms~15000ms Gain compensation: Maximum 12dB	
Peak limiter	Threshold range: -10dBu~ +20dBu Start-up time: 1ms~1000ms; Release time: 10ms~3000ms	Threshold range: -10dBu~ +20dBu Attack time: 1ms~1000ms; Release time: 10ms~3000ms	
Hard limiter	Threshold range: -10dBu~ +18dBu	Threshold range: -10dBu~ +18dBu	
Delay	The adjustable delay time of each input channel + output channel is 452ms, Step accuracy 0.0104ms (10.4us)	The adjustable delay time of each input channel + output channel is 452ms, Step accuracy 0.0104ms (10.4us)	
	Each input channel and output channel can import FIR filter with 48kHz sampling rate and 512 taps	Each input channel and output channel can import FIR filter with 48kHz sampling rate and 512 taps	
General			
Preset	32	32	
size	482x44x207mm 1RU	482x44x207mm 1RU	
Net/Gross weight	3.0 Kg	3.0 Kg	

NOTE: SPECIFICATIONS ARE SUBJECT TO CHANGE WITHOUT PRIOR NOTICE.

LLOYD LEE CO.

Mobile: 9833374789/9820307275
Email Add: sales@lloydleecompany.com
Website: www.lloydleecompany.com

ELECTROCORD

SERIES

HIGH POWER PROFESSIONAL DIGITAL AMPLIFIERS



ELECTROCORD AMPLIFIERS

HIGH POWER PROFESSIONAL DIGITAL AMPLIFIERS

The ELECTROCORD Power Amplifiers comprise 3 series, the S, U & The Q series. The S series has 3 models, U has 2 models & Q has 2. The amps are designed especially for highly demanding touring environment where live sound hire companies push the threshold of high-power performance and reliability to its extreme.

All S, U & Q Series amplifiers are built

around the same core technologies, S & U - Classs TD & Q - Class D output stage RSMPS regulated switch-mode power supplies, and highly efficient heat dissipation systems.

Designed as "work horses" and based on our ZE Series amplifiers, ELECTROCORD amplifiers' dependability and performance meet the extreme standards of any on-road use, offering

reliable protection against thermal and capacitive overload, short-circuit, and the occurrence of HF and DC at their outputs. ELECTROCORD amplifiers have been developed considering one main factor: getting as many watts as possible for your money, without compromising sound quality.

S SERIES AMPLIFIERS

MAXIMUM WATTS.

ELECTROCORD S10004

■ FEATURES

- S10004 (Class TD) - 4 Channel, 2200W per channel @4 Ohms.
- State of the art SMPS power supply technology.
- Compact 2U size, low weight, high efficiency, high power & high reliability.
- The S series is equipped with state-of-the-art protection system.
- S 10004 amplifier is designed with high efficiency heat sink.



ELECTROCORD S12000

■ FEATURES

- S12000 (Class TD) - 2 Channel, 3200W per channel @4 Ohms.
- State of the art SMPS power supply technology.
- S series amplifier suits the most demanding applications due its small size,
- Low weight, High efficiency, High power and High reliability.
- The S series is equipped with state-of-the-art protection system.
- High efficiency short range duct double copper ribbon heat sink.



ELECTROCORD S14000

■ FEATURES

- S14000 (Class TD) - 2 Channel, 4350W per channel @4 Ohms.
- State of the art SMPS power supply technology.
- S series amplifier suits the most demanding applications due its small size,
- Low weight, High efficiency, High power and High reliability.
- The S series is equipped with state-of-the-art protection system.
- High efficiency short range duct double copper ribbon heat sink.



Q SERIES AMPLIFIERS

ELECTROCORD Q1404

■ FEATURES

- Q1404 (Class D) - 4 Channel Amp, 1400W per channel @4 Ohms.
- State of the art SMPS power supply technology.
- Compact 1U size, low weight, high efficiency, high power & high reliability.
- Voltage regulation technology for more Dynamic power.
- The Q series is equipped with state-of-the-art protection system.
- Q1404 amplifier is designed with high efficiency heat sink.



ELECTROCORD Q2004

■ FEATURES

- Q2004 (Class D) - 4 Channel Amp, 2000W per channel @4 Ohms.
- State of the art SMPS power supply technology.
- Compact 1U size, low weight, high efficiency, high power & high reliability.
- Voltage regulation technology for more Dynamic power.
- The Q series is equipped with state-of-the-art protection system.
- Q2004 amplifier is designed with high efficiency heat sink.



UNCOMPROMISED SOUND.

U SERIES AMPLIFIERS

ELECTROCORD ULTRA U12000Q

■ FEATURES

- U12000Q (Class TD) – 4 Channel, 2550W per channel @4 Ohms.
- State of the art voltage regulation technology for more dynamic power.
- High quality semi-conductors to improve reliability and sound.
- The U series is equipped with state-of-the-art protection system.
- High efficiency short range duct double copper ribbon heat sink.



ELECTROCORD ULTRA U16000D

■ FEATURES

- U16000D (Class TD) – 2 Channel, 4350W per channel @4 Ohms.
- State of the art voltage regulation technology for more dynamic power.
- High quality semi-conductors to improve reliability and sound.
- The U series is equipped with state-of-the-art protection system.
- High efficiency short range duct double copper ribbon heat sink.



ELECTROCORD

TECHNICAL SPECIFICATIONS	S10004	S12000	S14000	Q1404	Q2004	U12000Q	U16000D
Output Power 1KHz, <0.05%THD							
8 Q Stereo Power	4x1300	2x1800W	2x2400	4x800	4x1200	4x1500W	2x2400W
4 Q Stereo Power	4x2200	2x3200W	2x4350	4x1400	4x2000	4x2550W	2x4350W
2 Q Stereo Power	4x2400	2x4800W	2x7000	4x1700	4x2300	4x3400W	2x7000W
8 Q Bridged Monon Power	2x4400	1x6400W	1x8700	--	--	2x4500W	1x8700W
4 Q Bridged Monon Power	2x4800	1x9600W	1x14000	--	--	2x6800W	1x14000W
THD(20Hz-20kHz for 1W)	<0.1%			<0.1%		<0.1%	
THD(1kHz and 1dB below clipping)	<0.05%			<0.05%		<0.05%	
Gain (optional)	23, 26, 29, 32, 35, 38, 41, 44dB			Gain selectable - 35,32,38,40dB		23, 26, 29, 32, 35, 38, 41, 44dB	
Signal Noise Ration	110dB			110dB		110dB	
Frequency Response (+/-0.1dB)	10Hz-34kHz			20Hz-25KHz +/- 0.5dB		10Hz-34kHz	
Damping coefficient	>600			>600		>600	
Impedance (balanced/unbalanced)	20KQ/10KQ			20kΩ Balanced / 10kΩ ohm Unbalanced		20KQ/10KQ	
Output socket	Speakon Connectors (NEUTRIK)			Speakon Connectors (NEUTRIK)		Speakon Connectors (NEUTRIK)	
Input socket	XLR type,3pin (NEUTRIK)			XLR Female, 3 Pin (NEUTRIK)		XLR type,3pin (NEUTRIK)	
Link socket	XLR type,3pin male (NEUTRIK)			XLR Male, 3 Pin (NEUTRIK)		XLR type,3pin male (NEUTRIK)	
Protection	Short circuit, open circuit, thermal, overload, DC, super audio protection			Short circuit, open circuit, thermal, overload, DC, super audio protection		Short circuit, open circuit, thermal, overload, DC, super audio protection	
Power Requirement	200-240V ~50-60HZ	200-240V ~50-60HZ	200-240V ~50-60HZ	200-240V ~50-60HZ	200-240V ~50-60HZ	200-240V ~50-60HZ	
Size(W x H x D)	483x377x88mm	483x377x88mm	483x377x88mm	483x445x88mm	483x445x88mm	483x455x88mm	483x455x88mm
Weight (Approx)	16.5Kg	18Kg	18Kg	8.5Kg	9Kg	17Kg	15Kg

NOTE: SPECIFICATIONS ARE SUBJECT TO CHANGE WITHOUT PRIOR NOTICE.

LLOYD LEE CO. SYSTEMS USED FOR

AJAY-ATUL. AVADHOOT GUPTA. VAISHALI SAMANT.
SWARNIL BANDODKAR. SADHANA SARGAM. ANAND SHINDE.
ANURADHA PAUDWAL. LATA MANGESHKAR. NANDESH UMAP.
V4 ONCE MORE BAND. MALINI AWASTHI. KETAKI MATEGAONKAR.
FOLK AKKHYAN. NAVRAJ HANS.

AKON. EDWARD MAYA. JIMMY FELIX. TERI MIKO.
DJ AKHIL TALREJA. DJ SUKETU. DJ CHETAS. DJ KIRAN(K&G)
SUNBURN | SUNBURN RELOAD | SUNBURN CAMPUS
Vh1 SUPER SONIC. TRANCE ME FEST. NUCLEYA. PROGRESSIVE BRO
THE LOST STORIES. DJ NYK. DJ KRATX. PROJECT 91.

PHALGUNI PATHAK. GEETA RABARI. KIRTIDAN GADHVI.
BHAVIN SHASTRI. BHOOHI TRIVEDI.

NEETI MOHAN. SUDESH BHOSALE. ALKA YAGNIK. SONU NIGAM.
AMIT KUMAR. ZAKIR HUSSAIN. HARIHARAN. SHANKAR MAHADEVAN
ADNAN SAMI. NILADRI KUMAR. SHAAN. ADITYA NARAYAN
SUKHBIR. SHREYA GHOSHAL. ASHA BHOSALE
ABHIJIT POHANKAR. PANKAJ UDHAS

PT. HARIPRSAD CHAURASIYA. PTS. RITESH RAJNISH MISHRA.
PT. SATISH VYAS. PT. SHAILESH BHAGWAT.
MAITHILI THAKUR. PADMASHREE SHUBHA MUDGAL.
PADMASHREE USTAD SHAHID PARVEZ. POOJA GAITONDE. SANJEEVANI BHELANDE.
PRATHMESH LAGHATE. MUGDHA VAISHAMPAYAN. PRAHLAD TIPANYA.
RADHIKA SOOD NAYAK. VAIDUSHI ARTI ANKALIKAR.
YASAHASVI JAISWAL.
PRSHANT KALUNDEKAR. ANAGHA PENDSE.

BADSHSH. KUNAL GANJAWALA. DALER MEHNDI. ROHIT RAUT.
ADARSH SHINDE. BAPPI LAHIRI. ABHIJEET SAWANT.
ABHIJEET KOSAMBI. AVDHOOT GANDHI. NILADRI KUMAR.
SHIVAMANI. TAUFIQ QURESHI. VAISHALI MHADE.
SURESH WADKAR. SUDHIR PHADKE.
AJIT KADKADE. RAHUL DESHPANDE.
MAHESH KALE. BELA SHENDE. AARYA AMBEKAR. RAHUL SAXENA
AND MANY MORE.....

INDIA'S LEADING SOUND SYSTEM DESIGN & MANUFACTURING COMPANY.

DRIVEN BY PASSION BACKED BY SCIENCE



LLOYD LEE CO.

SHOWROOM /ADMIN OFFICE

Unit No. 123/3, 1st Floor,
36A Mahal Industrial
Estate, Mahakali Caves Road,
Landmark: Opposite Apollo Industrial Estate,
Gundavali Village, Andheri East, Mumbai – 400 093

Mobile: 9833374789/9820307275

Email Add: sales@lloydleecompany.com

Website: www.lloydleecompany.com

NOTE: SPECIFICATIONS ARE SUBJECT TO CHANGE WITHOUT PRIOR NOTICE.